



**BUFFALO ARCHITECTURE FOUNDATION**

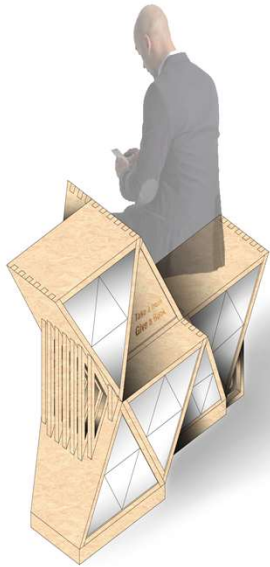


# BUFFALO ARCHITECTURE FOUNDATION



# LITTLE FREE LIBRARY®

BUFFALO ARCHITECTURE FOUNDATION

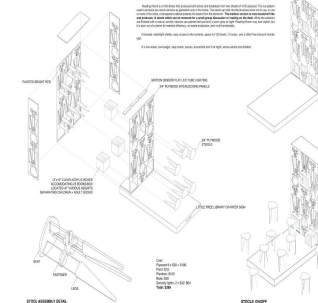


Isometric  
0 0.25 0.5 1m

J. WEINBERG

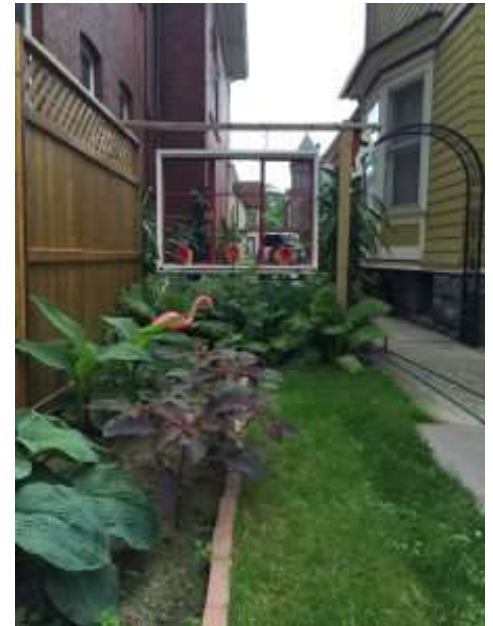


## [MEDIUM] READING ROOM



Every building  
**(and garden)**  
has a story.

Garden  
Walk  
Buffalo



Thank you to our sponsors:



**AIA**  
Buffalo/WNY



Interested in sponsoring or speaking at our next event? Contact us at  
[info@buffaloarchitecture.org](mailto:info@buffaloarchitecture.org)



Dan Shanahan

TORN SPACE































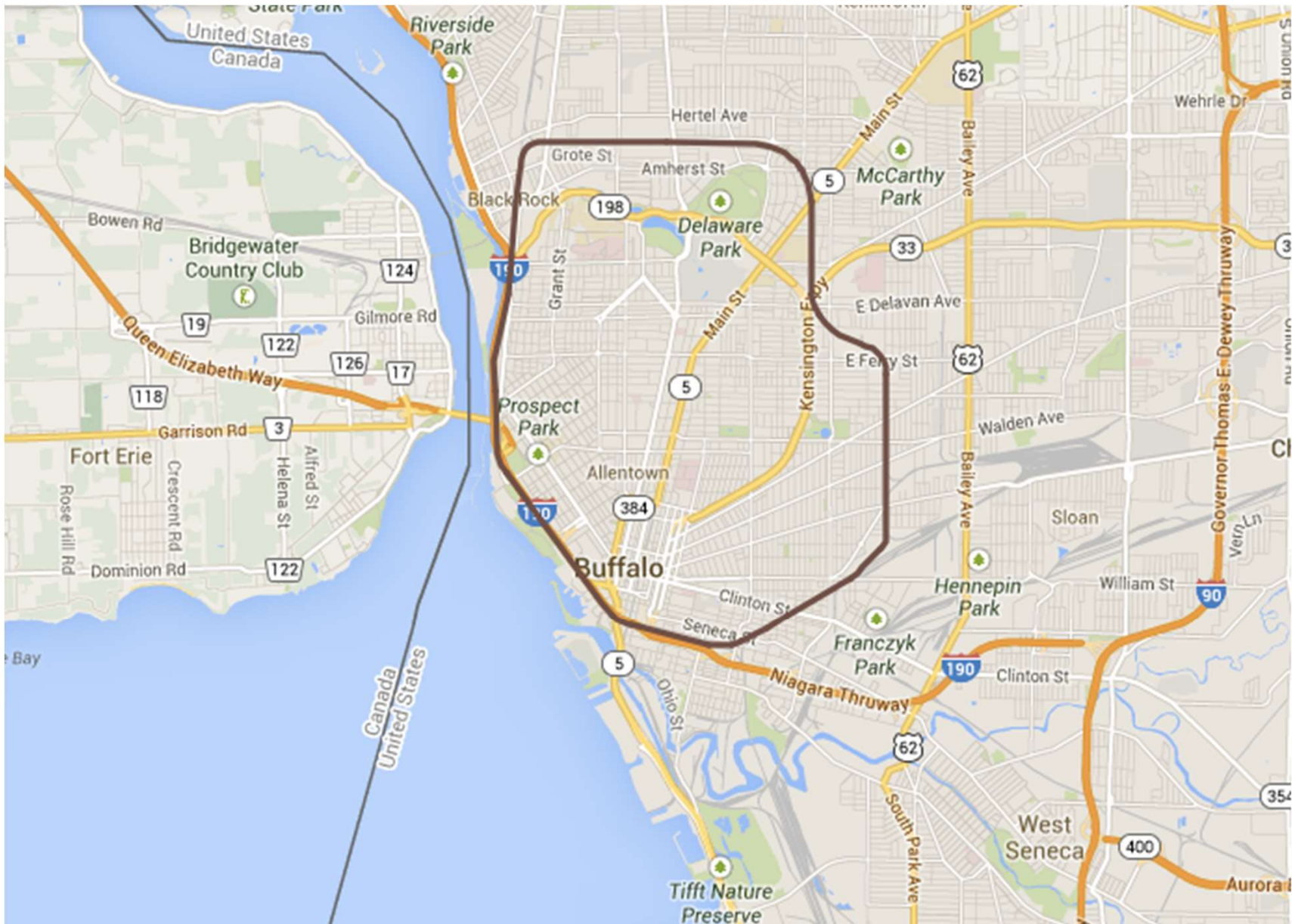




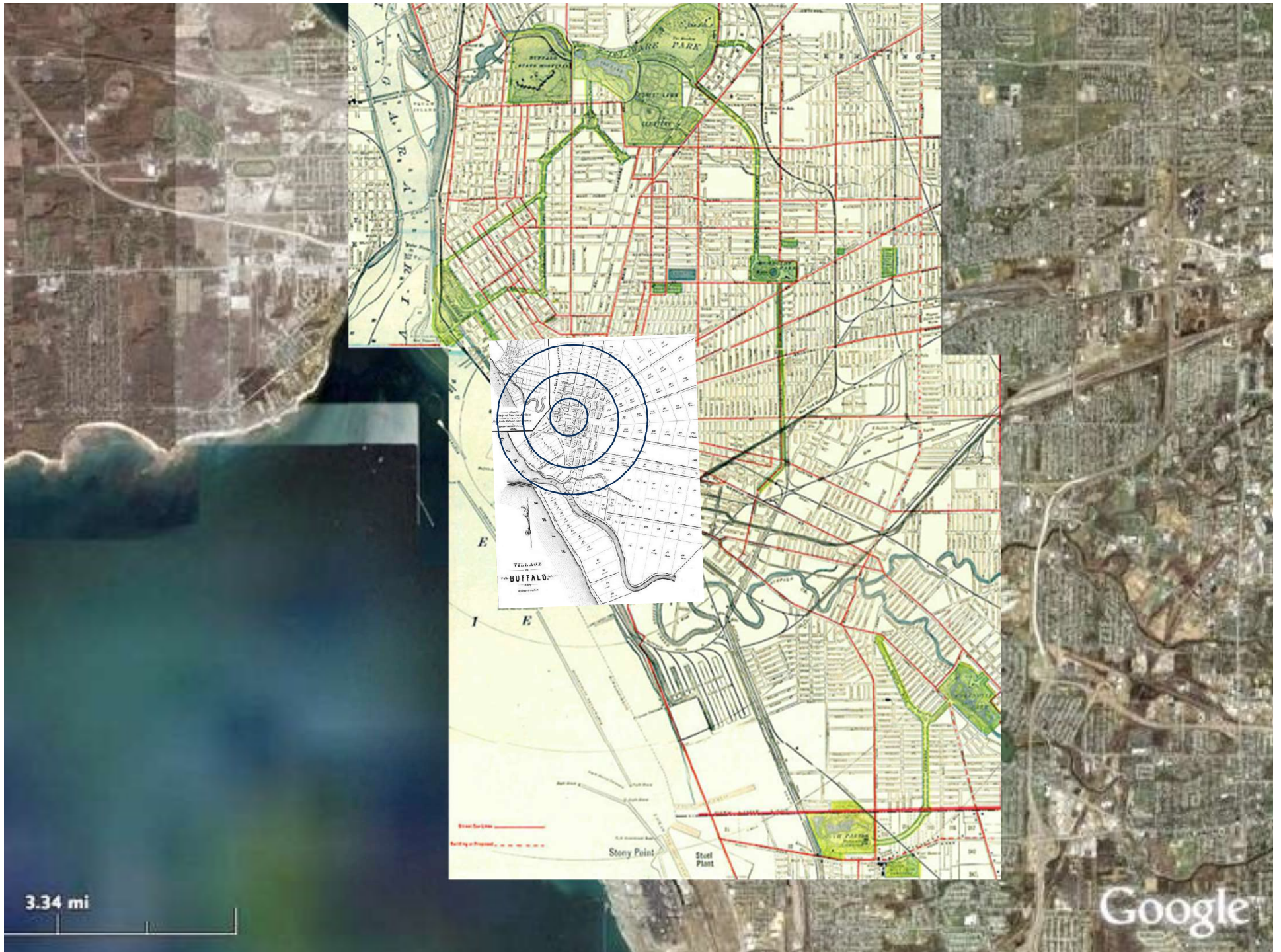
Chris Hawley

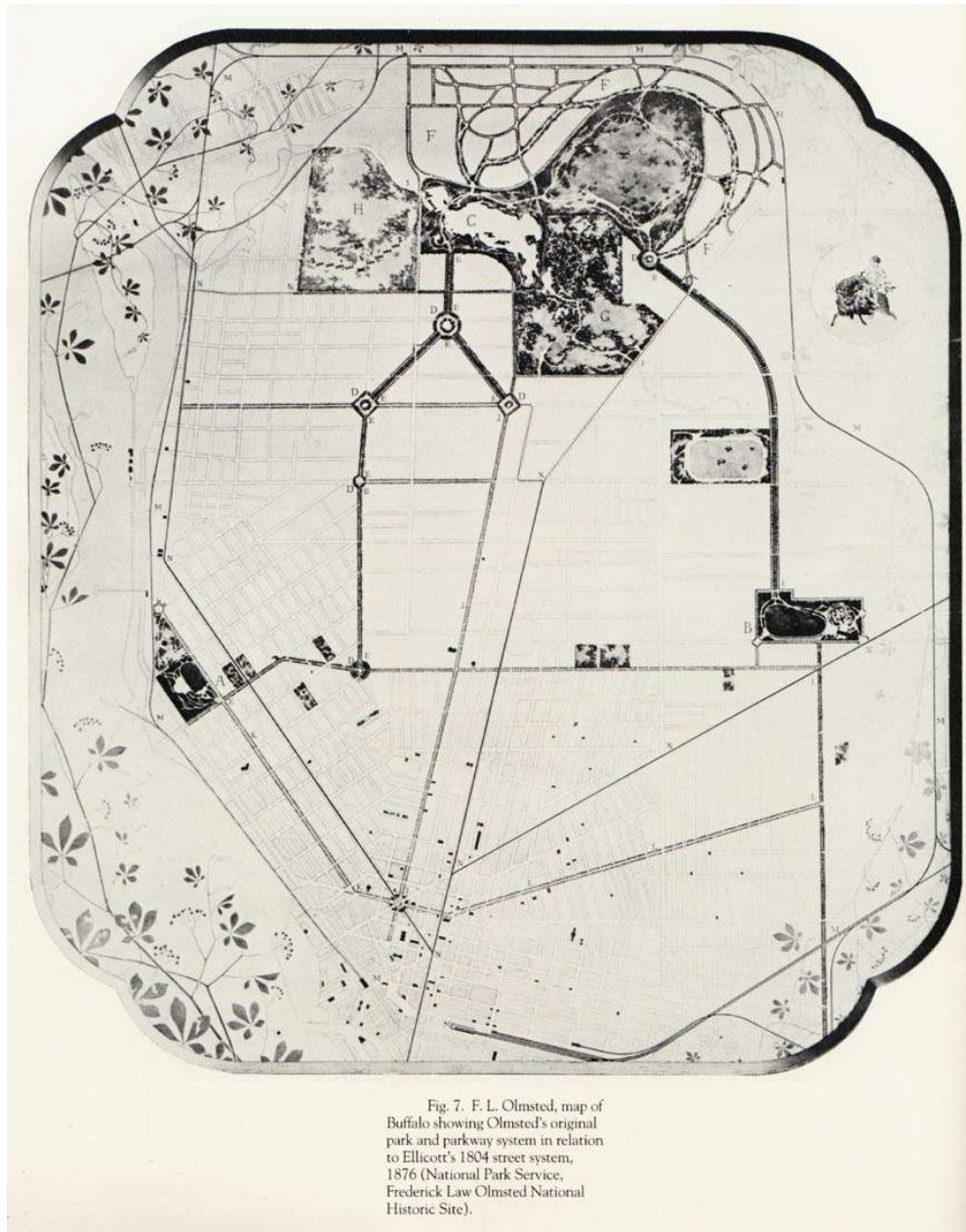






15 miles, 19 commuter rail stations

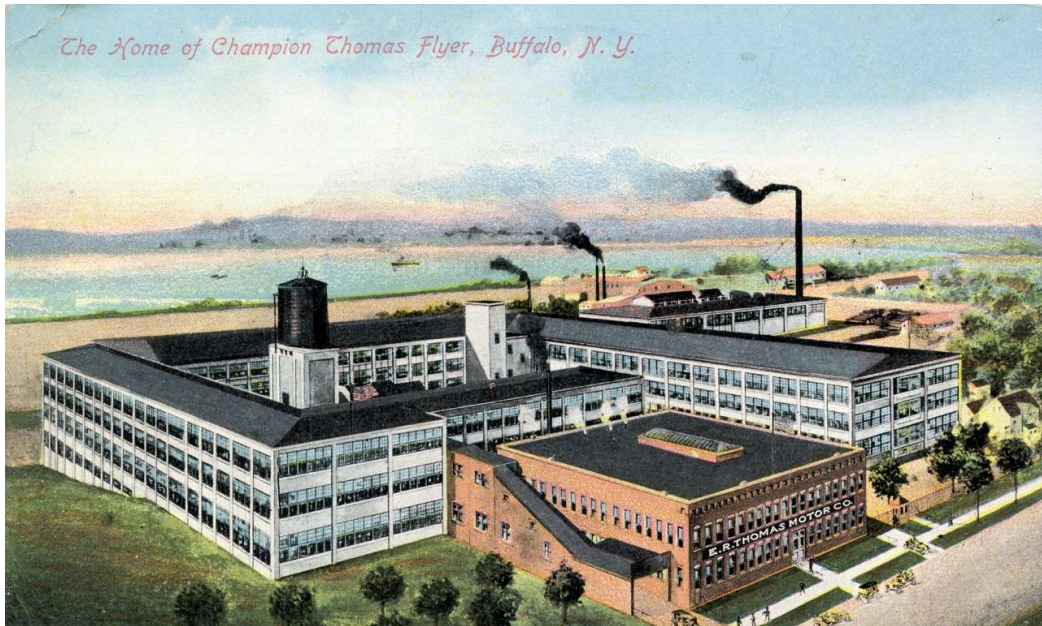


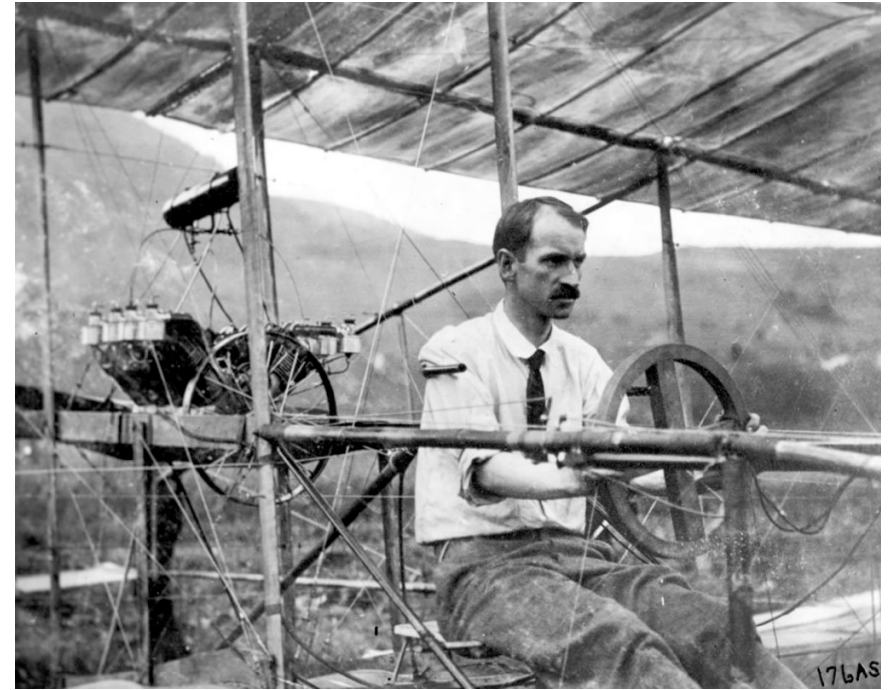
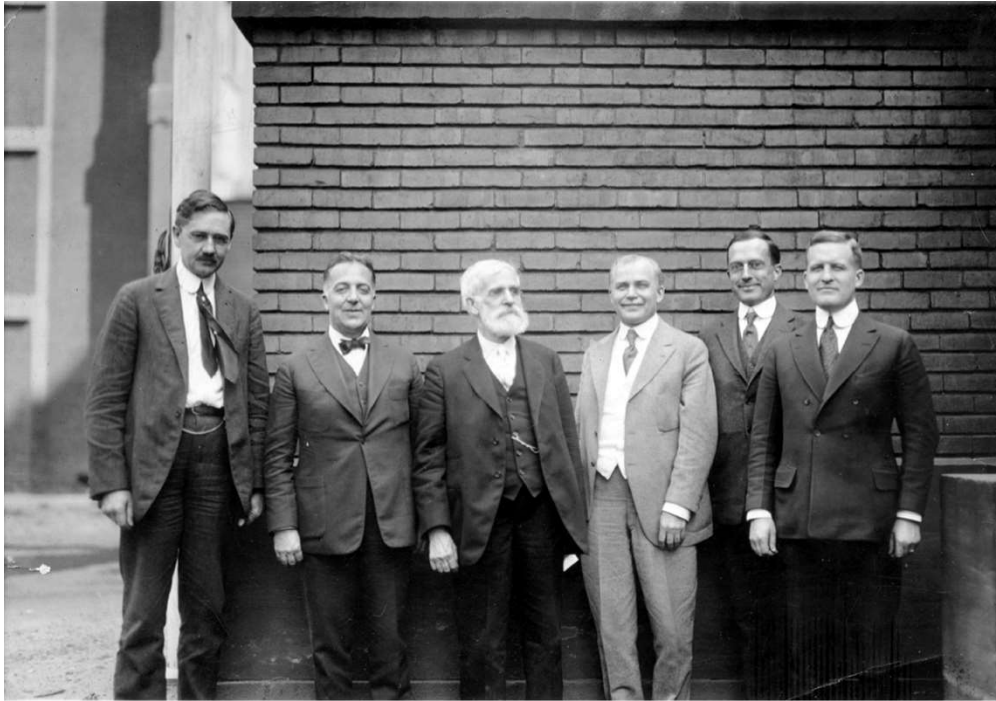


## Centennial International Exhibition (1876)



Ellicott, Olmsted, Belt Line:  
Three strands of Buffalo's development DNA









High-quality, adaptable building stock with large floor plates, plus parking and access to transit



Eligibility for historic tax credits



An amazing story...

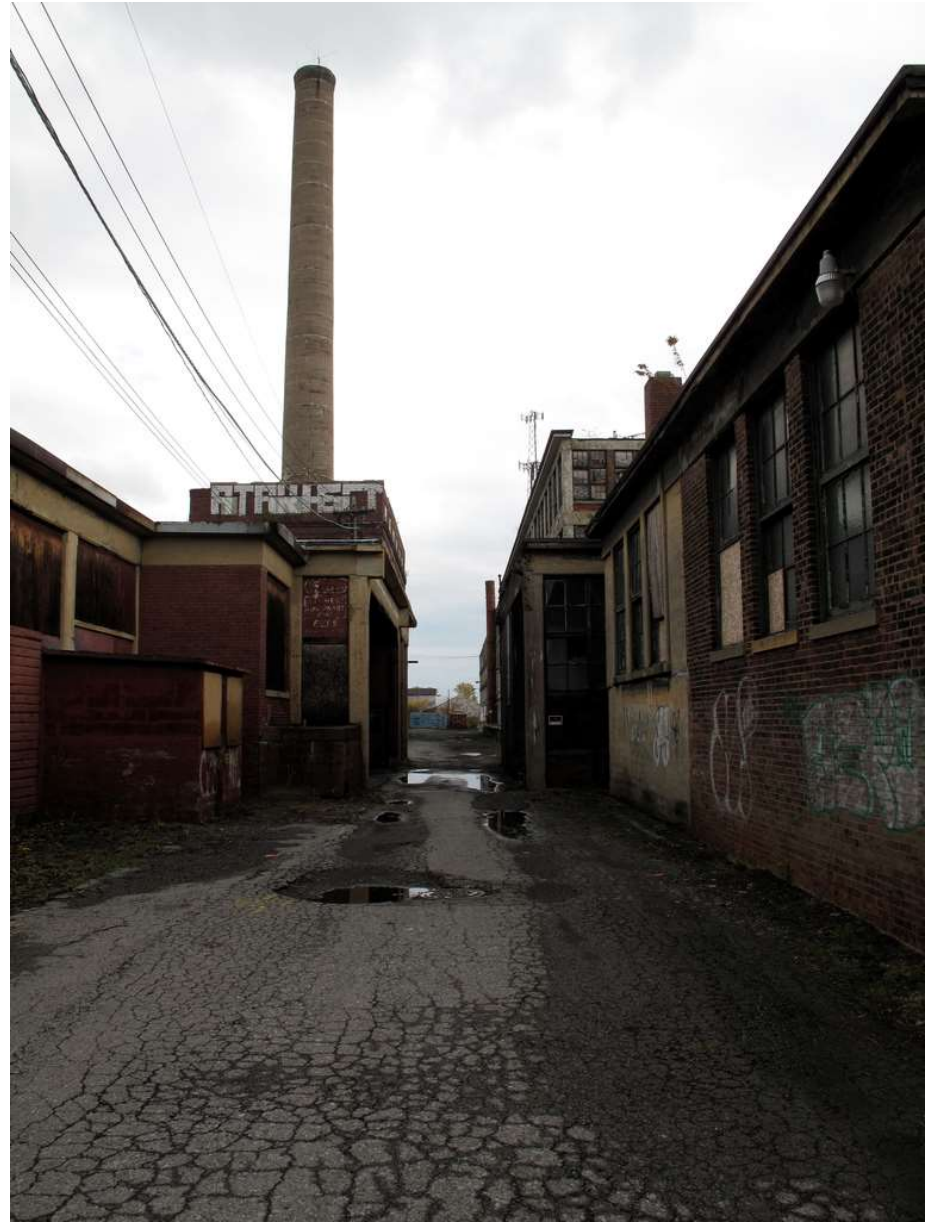


12 million SF = 14 HSBC Towers



FOR RENT  
GND FLOOR / UPPER FLOORS  
E-IN 10K SF / ARTIST SPACE  
CALL 462-3277

A-VERDI





*"I skate to where the puck is going to be, not  
to where it has been."*

**- Wayne Gretzky**

Facebook interface for the **Belt Line** page. The page is viewed as **Belt Line** (Change to Chris Hawley).

Navigation tabs: **Page**, Activity **6**, Insights, Settings. **Build Audience** and **Help** are also available.

The main image shows a large concrete bridge over a railway track, with the text **Belt Line Landmark** overlaid. Below the image are buttons for **Liked**, **Following**, **Message**, and a menu icon.

On the right sidebar, statistics for **THIS WEEK** are shown:

- 0 Page Likes
- 67 Post Reach
- UNREAD
- 6 Notifications
- 0 Messages

Below the main image, the **Timeline** tab is selected, showing options for **About**, **Photos**, **Likes**, and **Manage Tabs**.

On the left, the **PEOPLE** section shows **367 likes** and lists **Chuck Banas, Andrew Kulyk and 144 others** who liked the post.

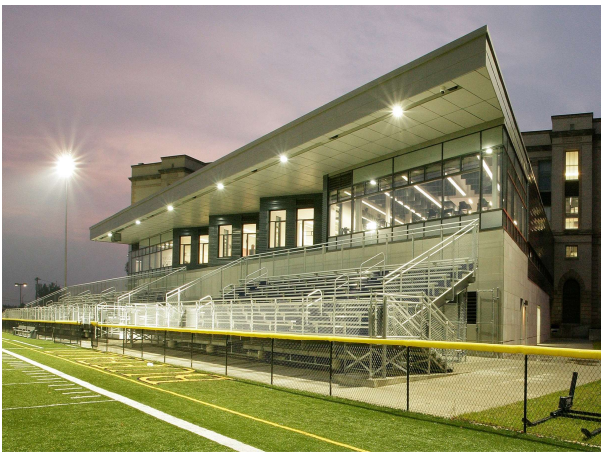
The bottom section shows the **Status** tab selected, with a prompt to post a **Status**, **Photo / Video**, or **Offer, Event +**. The status text is "What have you been up to?".

On the far right, a **Recent** section shows the year **2014**.

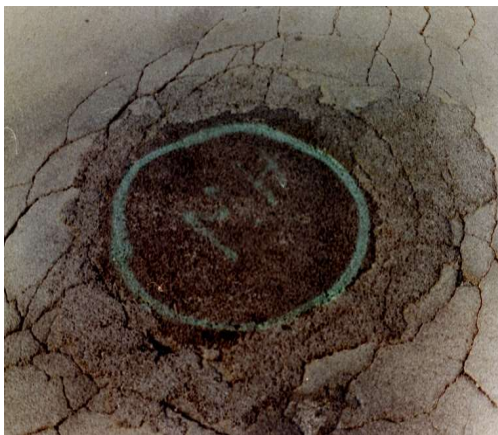
facebook.com/buffalobeltline

David Zielinski











No. 770

BUFFALO, N. Y., Dnia 24 Kwietnia 1917

CEMENTARZ POLSKO RZYMSKO



KATOLICKI ŚW. STANISŁAWA, B. i M.

Zapłacił

Michalina Przybyłoka  
Dwadzieścia Pięć

Dolarów

Za

Grób L. 10

No. 30,

w Sekcyi nowej

\$ 25.00 —

nową oddział 2.

Sekretarz.

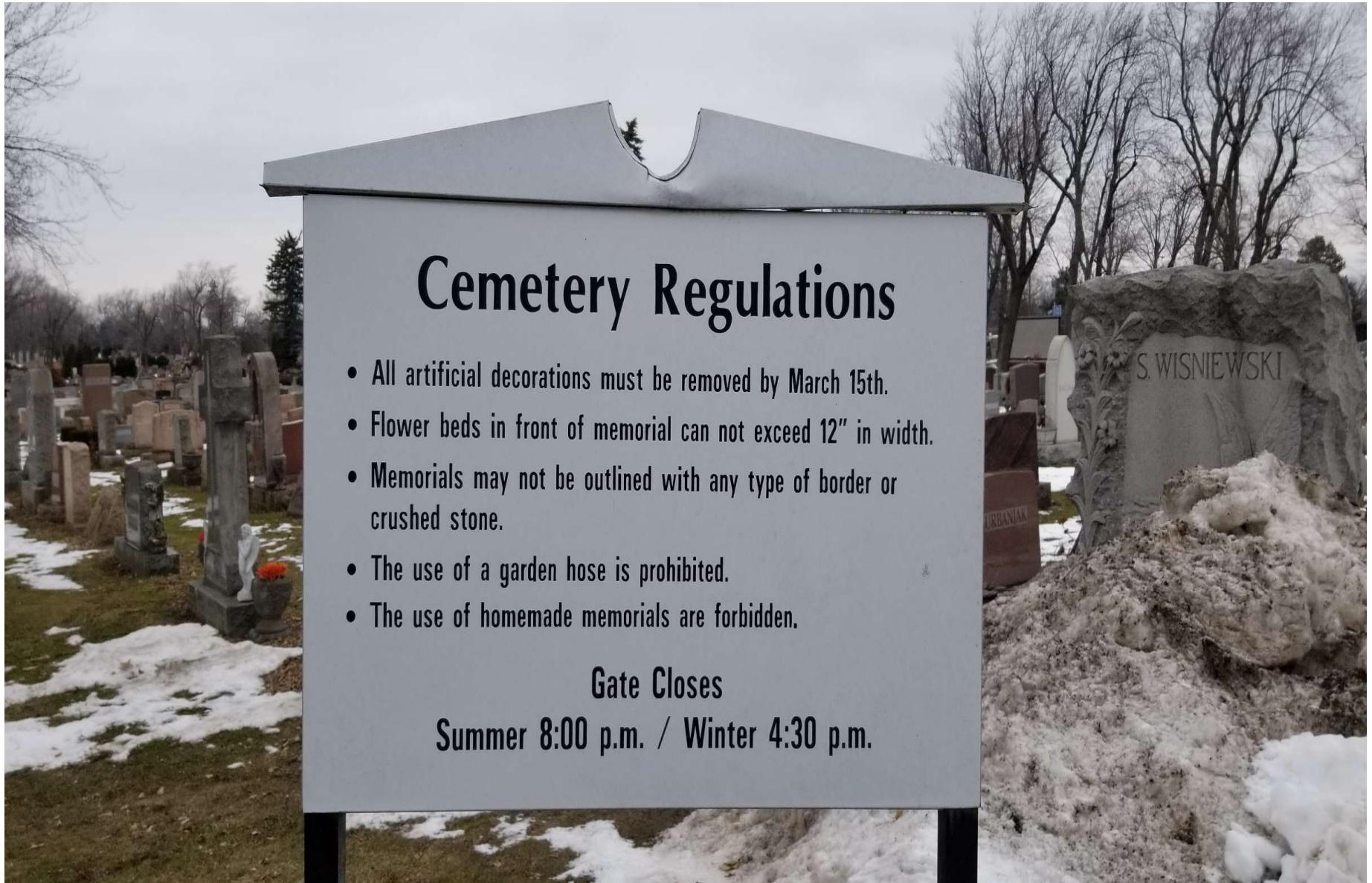
JOS. S. WOITKOWSKI

# Cemetery Regulations

- All artificial decorations must be removed by March 15th.
- Flower beds in front of memorial can not exceed 12" in width.
- Memorials may not be outlined with any type of border or crushed stone.
- The use of a garden hose is prohibited.
- The use of homemade memorials are forbidden.

**Gate Closes**

**Summer 8:00 p.m. / Winter 4:30 p.m.**





BABY  
TERESA  
NOWAK  
1931



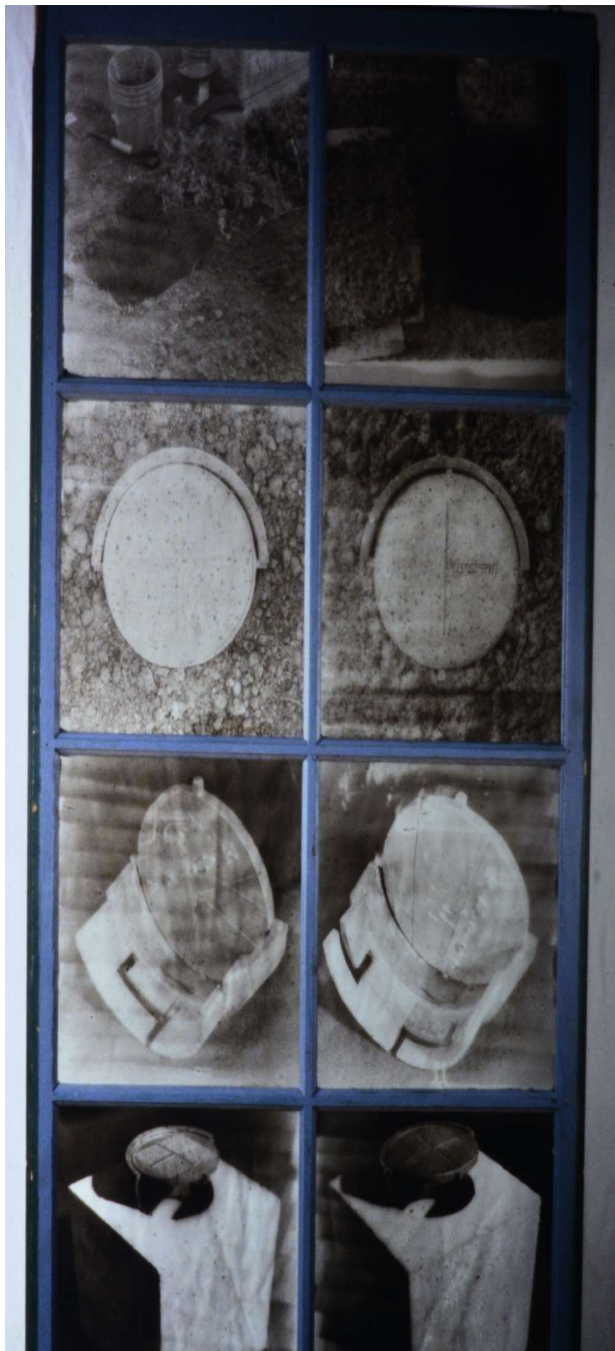






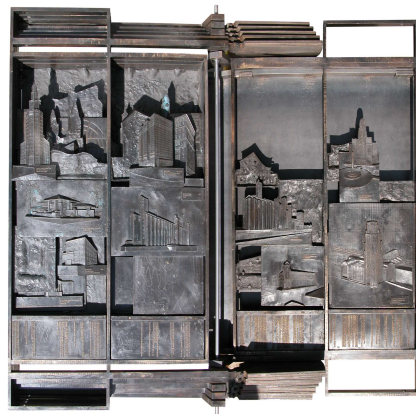
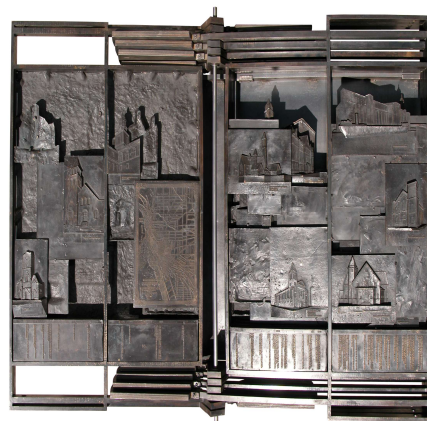
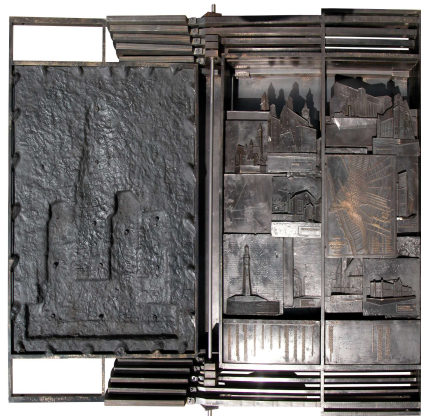












Joseph Lyons

**1318 - 1322 Hertel Ave**

Joseph Lyons, Owner, Operator Joe's  
Deli, LLC  
and Buffalo Catering Co.

# Hertel/Colvin @ 2005



# Establishing our Brand



# Colvin Blvd.



# One of the busiest corners in North Buffalo



# Calm Before the Storm



# Purchased As Is...



# Complete Remodel



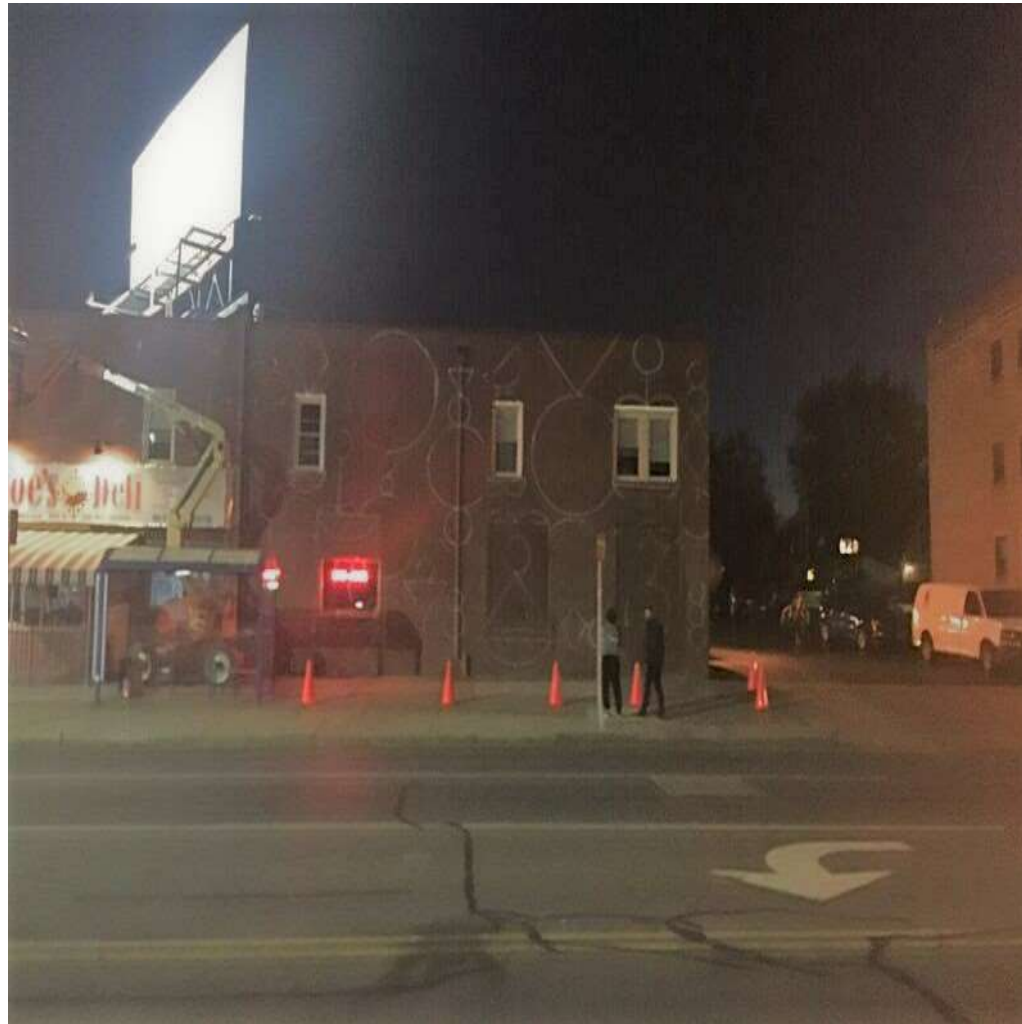
# Finished Apt's #1 & #3



# Exterior Repairs



# Projector Outline



# Bunnie Reiss & AK



# Work in Progress..



# Almost There!



# Colvin Blvd.



# Parking Lot Mural



# Magic Buffalo!!



# We've come a long way!!



Terra Courtney



COMO PARK





























**FREY**  
WELL DRILLING  
716-937-7977

**FREY**  
WELL DRILLING  
716-937-7977



23





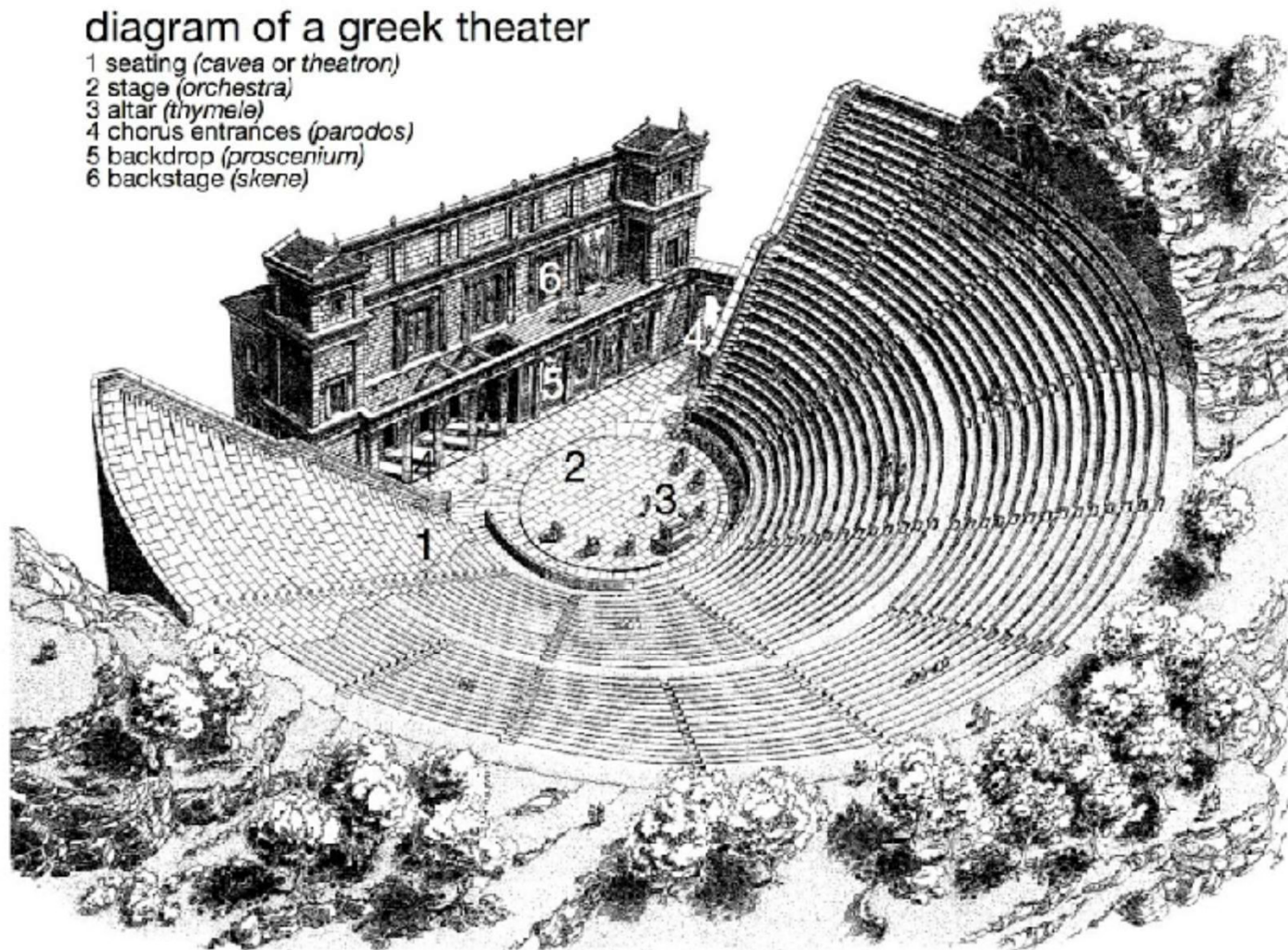
INTERMISSION

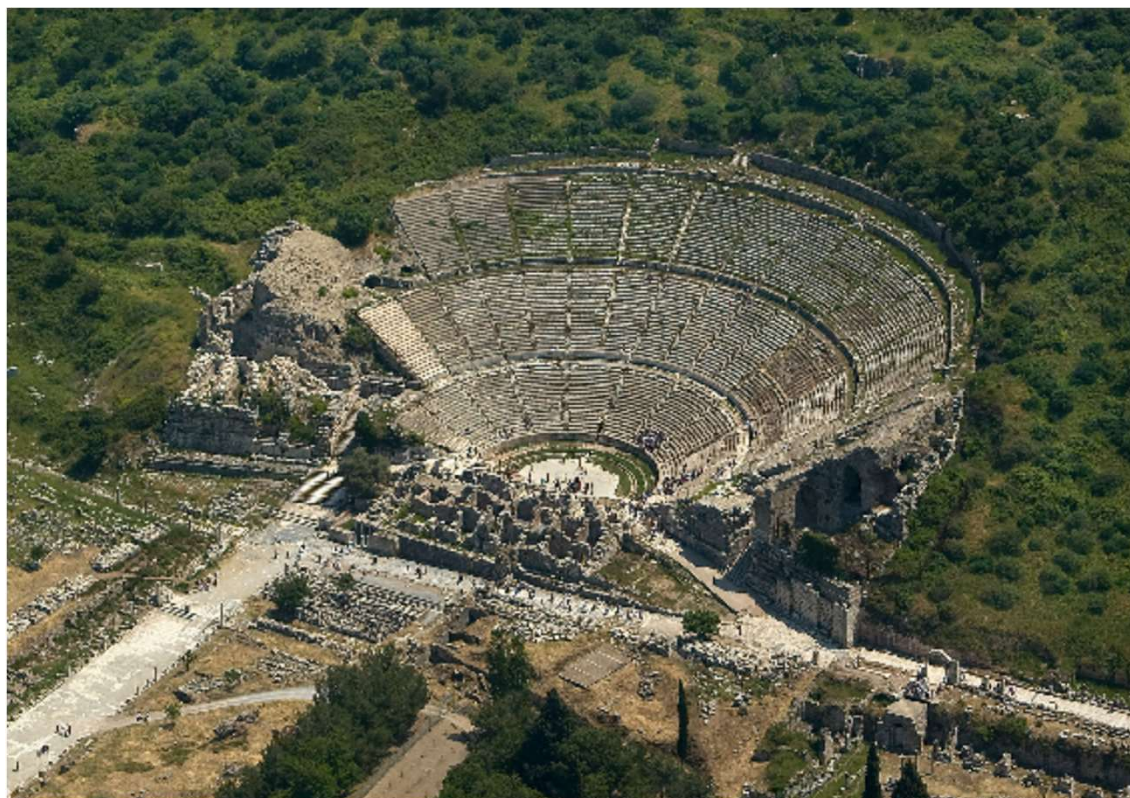


Larry Smith

## diagram of a greek theater

- 1 seating (*cavea* or *theatron*)
- 2 stage (*orchestra*)
- 3 altar (*thymele*)
- 4 chorus entrances (*parodos*)
- 5 backdrop (*proscenium*)
- 6 backstage (*skene*)

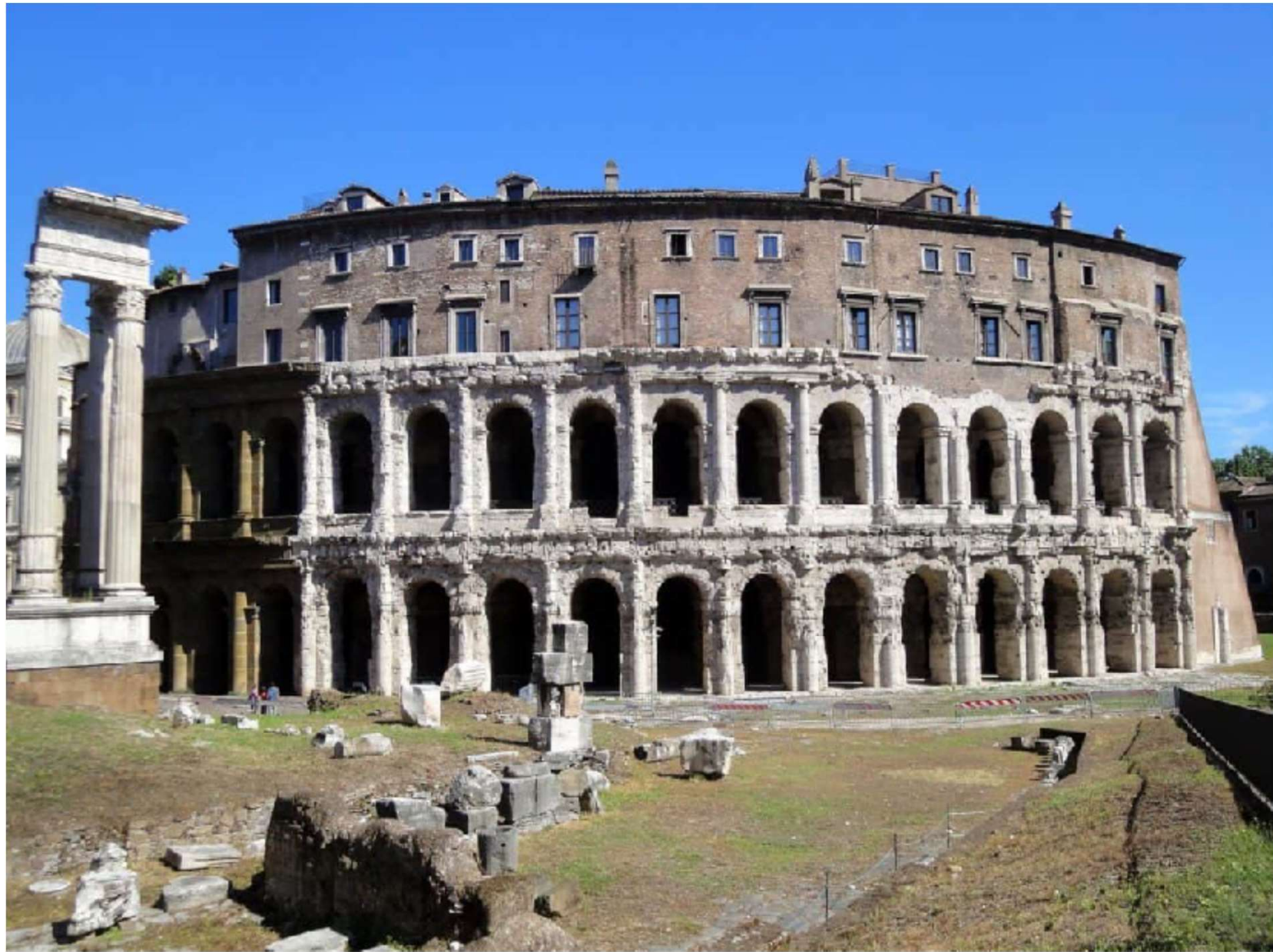














Download from  
**Dreamstime.com**

This watermarked comp image is for previewing purposes only.

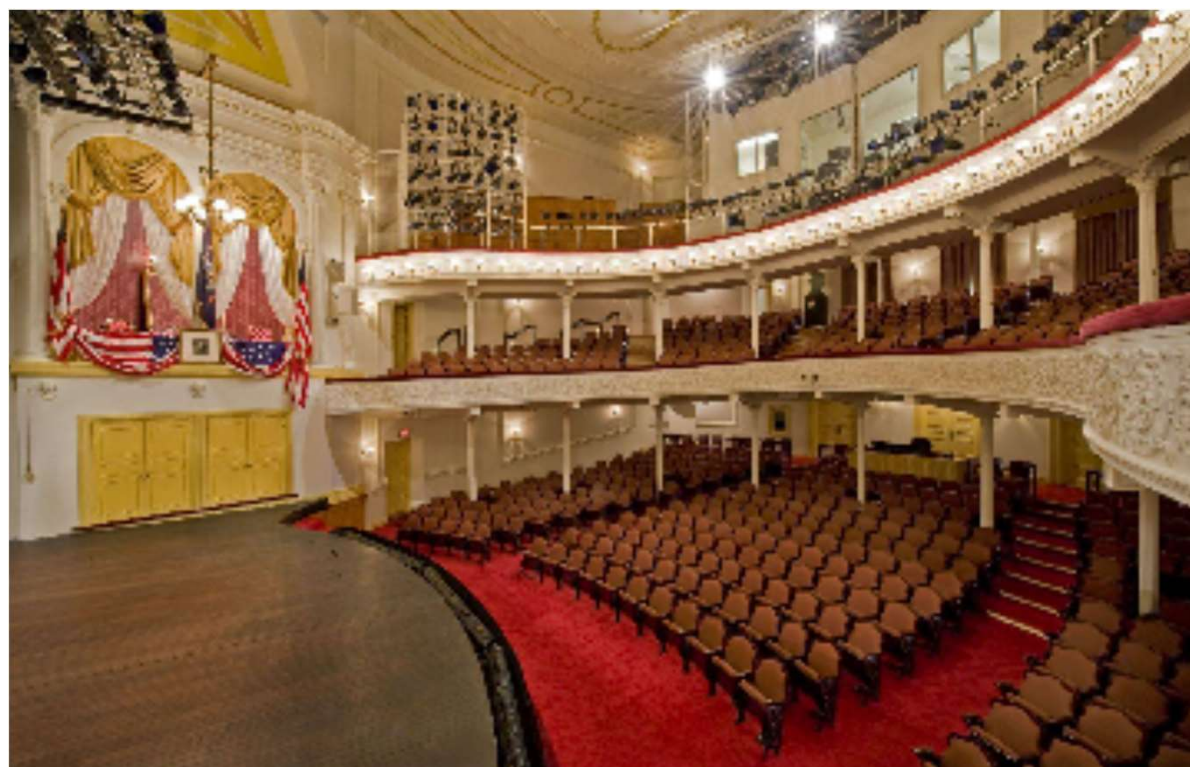


ID 45565135

© Antonio Amato | Dreamstime.com





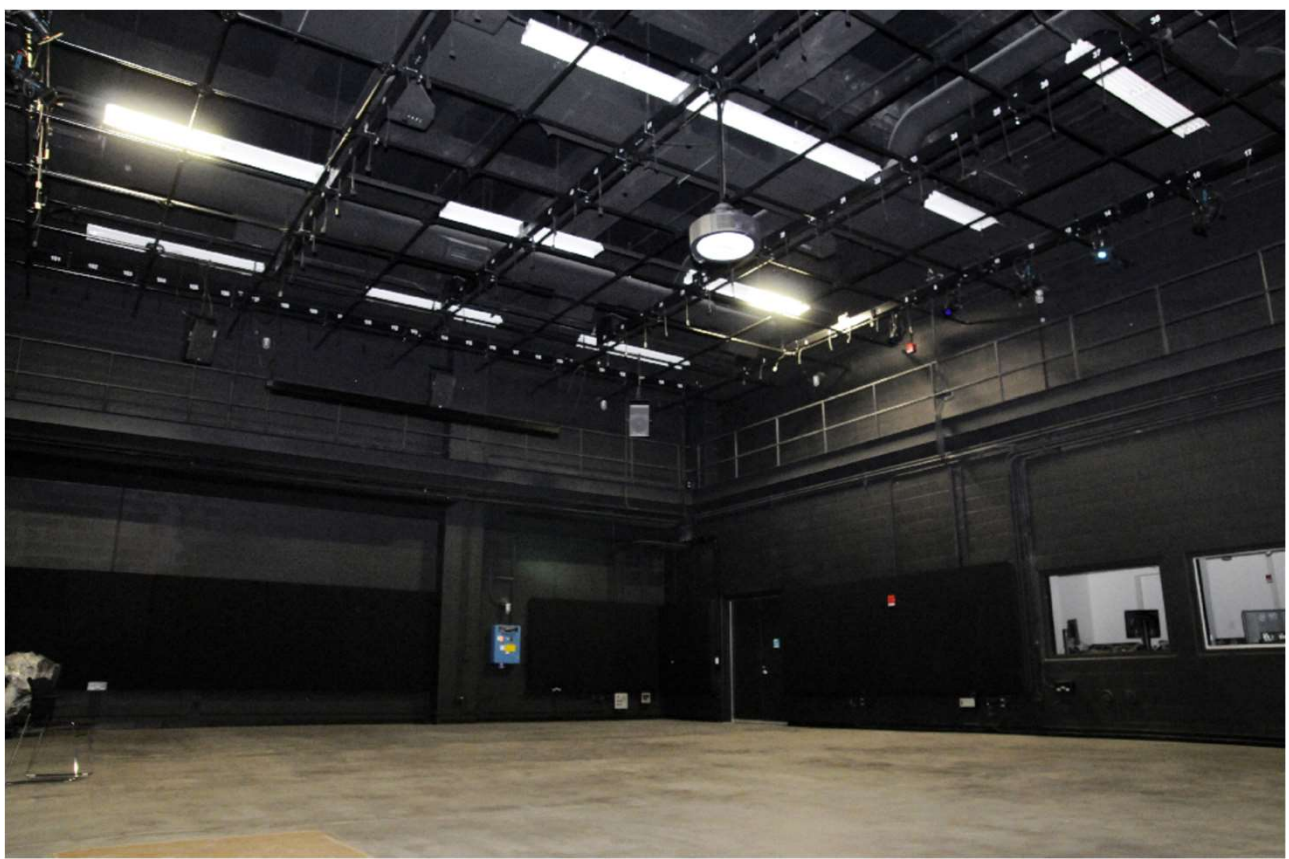










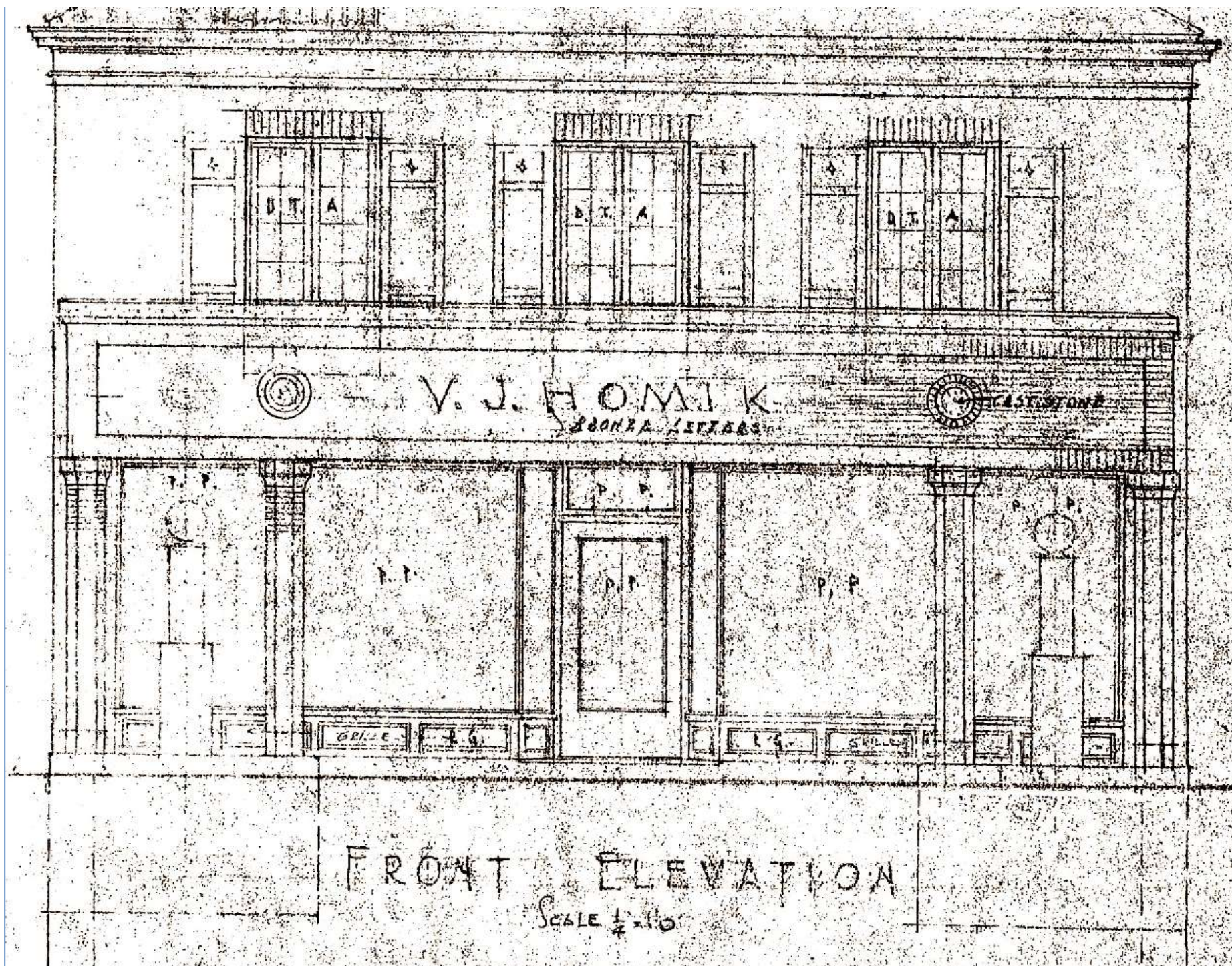


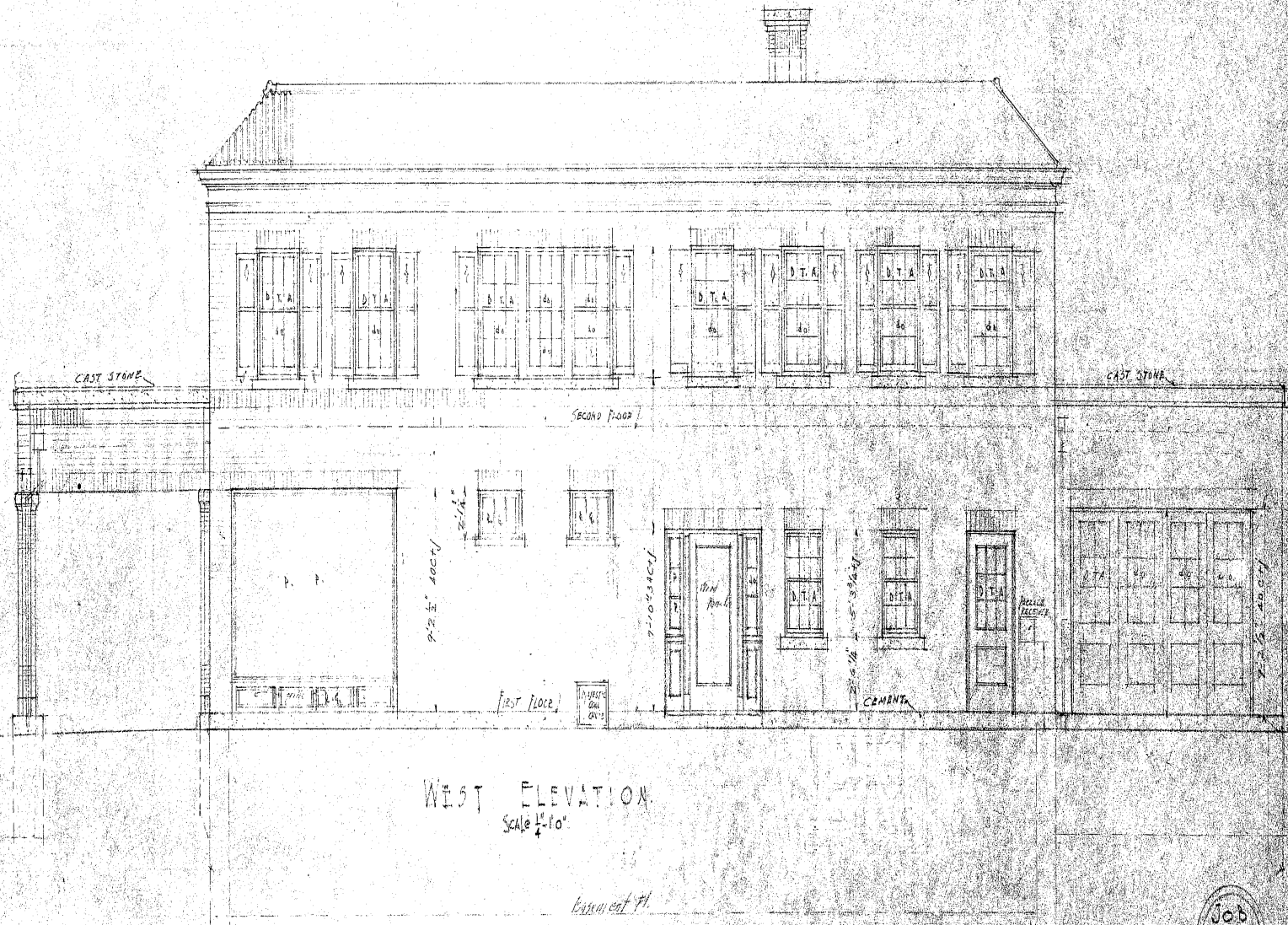






Susan Cholewa





Job  
153  
SHEET  
7

































Kevin Purdy



# TEDxBuffalo

x = independently organized TED event

What Buffalo, NY Needs!

[ABOUT](#)

[ATTENDEES](#)

[SPEAKERS](#)

[SPONSORS](#)



*With community involvement and active participation from the city's residents, we can rebuild the East Side, bring new employment opportunities to the city and create a sustainable infrastructure for our future and future generations.*

## WHAT'S NEW

### Our Application was Approved!

Our application has been approved! If you'd like to be a part of the TEDxBuffalo Team or contribute to the program, please contact Susan Cope.

May 11, 2010 / No comments

## STAY CONNECTED



## SPONSORSHIP

Sponsorship opportunities are available within all budgets.

# TED<sup>x</sup>Buffalo

x = independently organized TED event

[SCHEDULE](#)  
[SPONSORSHIP](#)  
[SPONSORS](#)

## TEDX BUFFALO IS POSTPONED

Posted on March 24, 2011 by Kevin

The TEDx Buffalo team must unfortunately announce that the first TEDx Buffalo event will not occur as planned on April 7, 2011. Our core volunteers are discussing an event for a future date, but for the time being we're working to reach out, inform, and apologize.







*Adrienne Bermingham*

*the Jane Goodall Institute  
Jane Goodall's Roots & Shoots*



**TEDx Buffalo**





**Bishnu Prasad Adhika**

@BishnuPrasadAd2

Following



My happiest day was 10/15/2013 after 1992.  
Thanks  
TEDxBUFFALO 2013

6:50 AM - 16 Oct 2013

7 Retweets 9 Likes



7



9



Tweet your reply

TEDxBUFFALO 2013



7



9





# Six Sources of Influence

	MOTIVATION	ABILITY
PERSONAL	<b>1</b> Make the Undesirable Desirable	<b>2</b> Surpass Your Limits
SOCIAL	<b>3</b> Harness Peer Pressure	<b>4</b> Find Strength in Numbers

If you want to influence a persistent problem you'll need to draw on many sources of influence.





## Experience

\*\*\*



## Marketing & Social

\*\*\*



## Sponsorship & Fundraising

\*\*\*



## Web

\*\*\*



## Website

\*\*\*



+ New

## Projects

...

### 2017 Event

Forward!



### 2016 Event

\*\*\*

Last year's event. Use the other one!







Thank you

@kevinpurdy

TEDxBuffalo.com

@TEDxBuffalo

E. Frits Abell



**A long road to finding...  
that place matters**

**How I learned  
to see Buffalo differently**

# Buffalo born and raised



# Professional background



**gfn.com**  
The Gay Financial Network



**PROGRESS**  
PARTNERS

# Re-engagement with Buffalo



**BUFFALO  
EXPAT  
NETWORK**

Harnessing the passion for Buffalo from around the world

[www.buffaloexpatnetwork.com](http://www.buffaloexpatnetwork.com)



**Buffalo as an Architectural Museum**

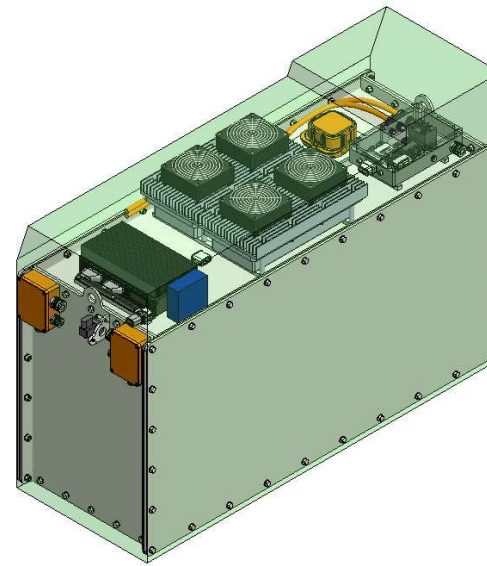
[www.buffaloah.com](http://www.buffaloah.com)

# Creative ventures\_Buffalo



# Social ventures

coo/ture™



# Board participation

[asiwny.org](http://asiwny.org)



[preservationbuffaloniagara.org](http://preservationbuffaloniagara.org)

PRESERVATION  
*Buffalo Niagara*

[designbuffalo.org](http://designbuffalo.org)

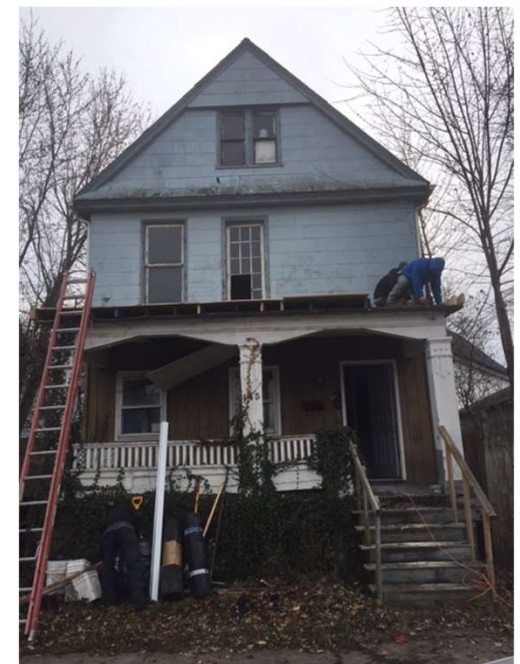
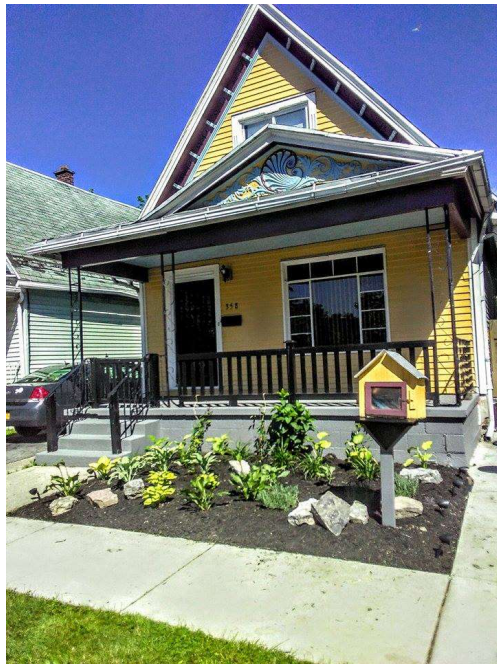


**Leverage social media**

**Preservation-Ready Sites**  
**Design Block**  
**Buffalo House Porn**  
**Buffalo Building Porn**  
**Blow-Ins & Boomerangs**

# Micro RE development

## Five Points Neighborhood



# How I became a preservationist.....



.....and a rabid preservationist



# Key learnings/themes

**Preservation Matters**

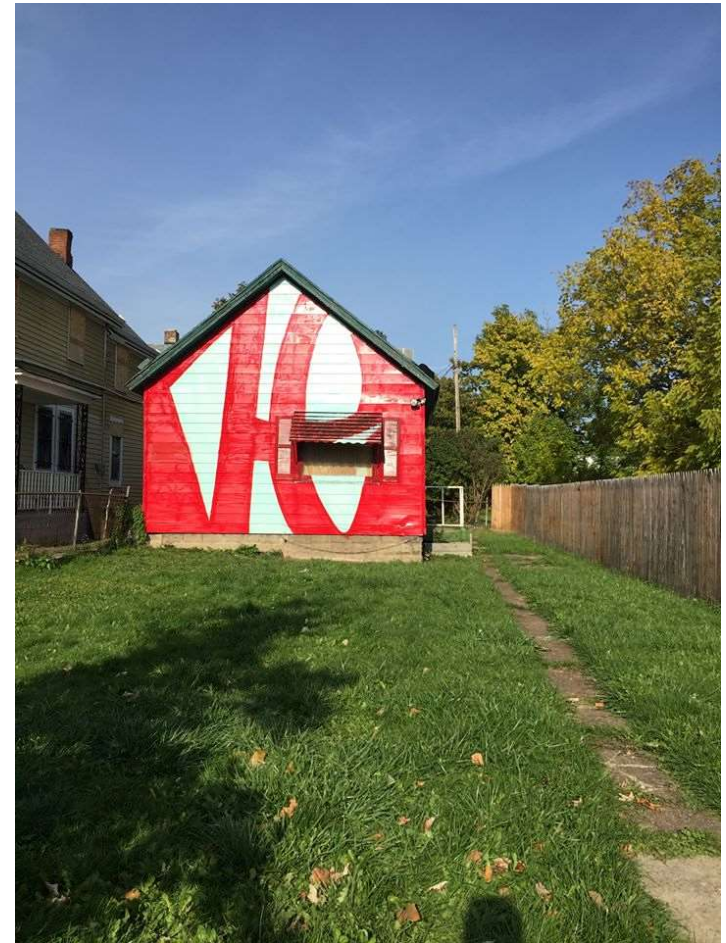


**Art + Design Matters**



**Community Matters**

# Art-making



# Engage design professionals



# Building community



# Fruits of collaboration



# Revitalized, vibrant commercial node

FIVE POINTS BAKERY

AND

TOAST CAFE



*Black Monarchy*



paradise wine.



# Revitalizing commercial node





**BUFFALO**  
**ARCHITECTURE**  
**FOUNDATION**